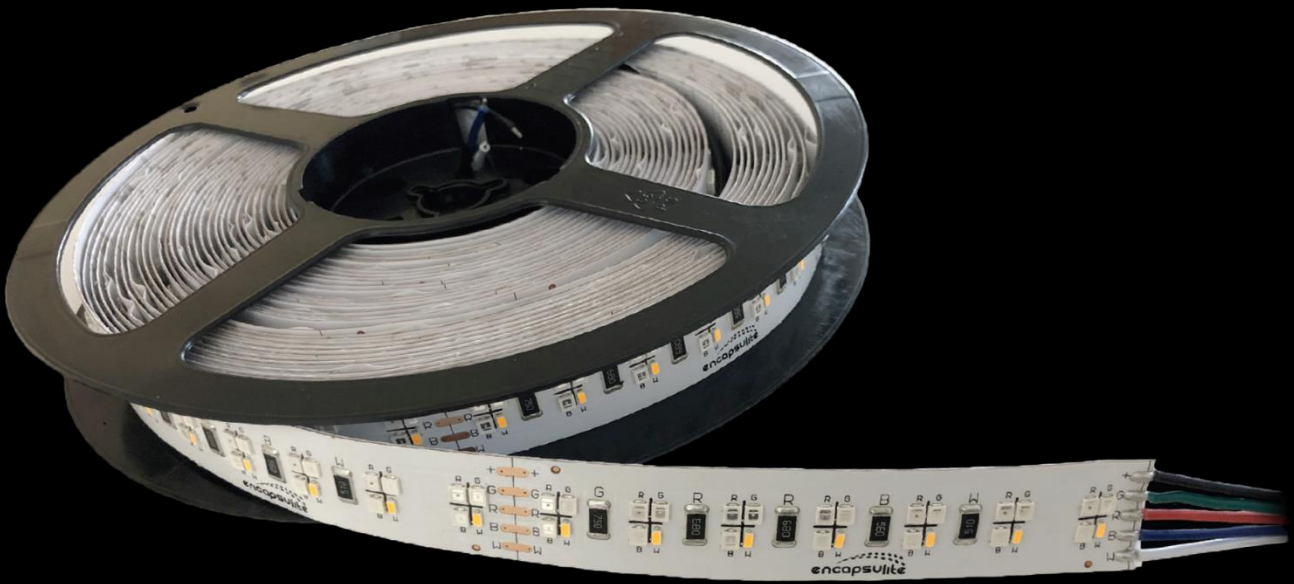


RGBW 2200K FLEX LED

REMOTE DRIVER



Red	621 Nanometers
Green	525 Nanometers
Blue	455 Nanometers
White	2200k
Operating Temperature	-25°C - +60°C

Cat No	Length (m)	W/m per colour
RGBW Roll 2200k	10	18

Driver Requirements	Width (mm)	Solder pads (mm) centred
24v DC RGBW	22	4

18w/m per colour, 100w RGBW driver will operate up to 5m maximum.

Encapsulite developed our own LED flex to address the requirements of our customers who required a very warm 2200k white for the entertainment leisure industry. A much cooler white can be achieved by mixing the RGB chips thus allowing a highly adaptable single source light.

22mm width allows for higher copper content and therefore better heat dissipation and reduces voltage drop on longer runs, as well as large 4mm centred solder pads making wire connection far easier.

3M 9080A adhesive backed for superior adhesion. Best suited for fitting to aluminium for optimum heat sink and longevity.

Specific lengths can be cut to order and supplied with five core cable if required.

Never run all colours or more than one colour at 100% output as damage will occur. If running three colours to make white, each colour should not exceed 30% output to avoid heat damage.

Need a waterproof product? Please enquire.

For further information

Call: +44 (0)1525 376974 Email: sales@encapsulite.co.uk Visit: www.encapsulite.co.uk