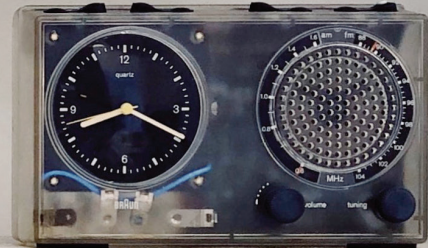
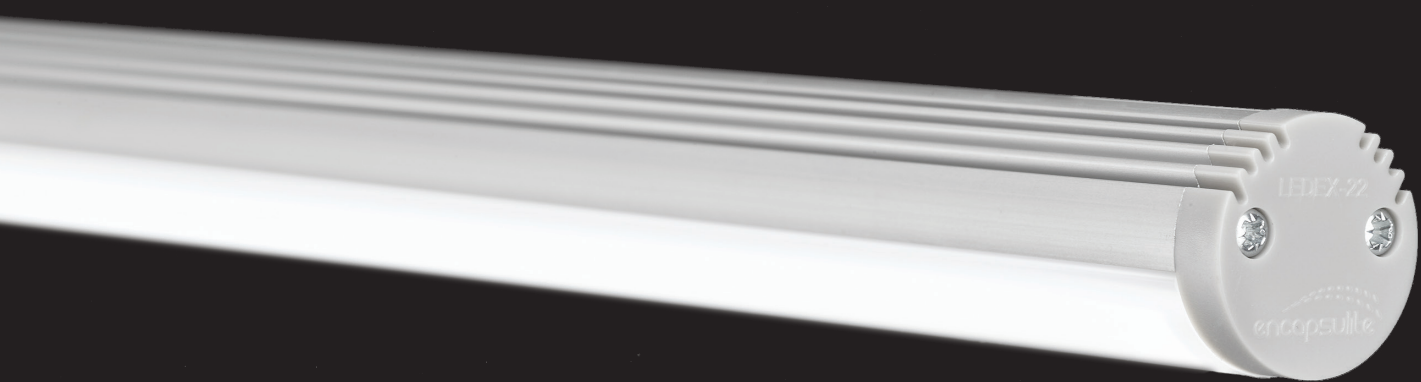


encapsulite

# LEDEX-22

## REMOTE DRIVER





## Designed and made by Encapsulite in the UK.

### THE LEDEX-22 WILL OPERATE FROM A 24V CONSTANT VOLTAGE REMOTE DRIVER AND CAN BE DIMMABLE.

- Branded LEDs and Drivers, peace of mind and quality built in.
- Short pitch LEDs for optimum light output with zero spotting. Clear PFA cable, super slim twin core copper/silver double insulated -75°C - +260°C, 10 Amp 300v RMS rated and able to pass through a 3.5mm hole. 2m fitted as standard, any length available. Made in the UK.
- Light blocking V0 rated end caps with cable restraint secured with screws (not push fit/fall out). Avoids pulled cables and damaged LED connections.
- Totally spot free Polycarbonate diffuser independently tested to GWT 960c.
- LED colour options and RGB, please enquire.
- Extruded aluminium silver as standard. Many options available please enquire.
- Comes complete with mounting brackets or choose to have various suspension options which we have readily available.
- Tridonic white LEDs.
- Tridonic Driver Remote, one driver can operate several lengths of white light up to 100w total, typically 5m in any configuration, or with 150w Driver any 7m configuration. Wattage for other colours are less, please enquire.
- 24v CV DC for extra safety in public areas.

Lengths to suit in 50mm increments (plus 15mm for end caps) 115mm, 165mm etc please note anything over 2m long may incur an extra packaging/carriage charge.

#### Light Source Information

- CRI 80+ & CRI 90+.
- Available in 2700K, 3000K, 4000K & 6500K.
- MacAdam 3.
- 72000, 60000 & 50000 hrs lifetime

#### Options

- Colour caps available in black & white.
- Suspension kits.
- Suspension rods.
- Surface mounting brackets.

#### Driver

A remote driver is required to run these fittings. Various wattage capacities available to suit your project.

#### Dimming

- Dali.
- 1-10V.
- DMX.
- Leading/Trailing edge.

#### Installation

- Horizontal, vertical and angled suspension kits.
- Surface mounted.

#### Optics

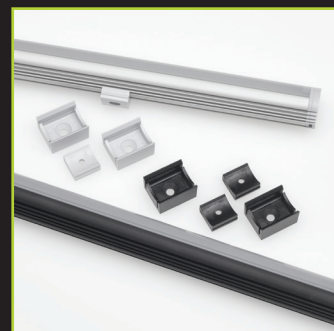
- Satin polycarbonate diffuser.
- 125° beam angle



Wire Supports



Bar Supports



Clips

LED Colour					Length (mm)
Standard Choice CRI 80>	827	830	840	865	50-3015
Cost Option CRI 90>	927	930	940	965	

For any other customisations please let us know.

- Supplied with 2m cable as standard, longer lengths available.

As with all Encapsulite products we make to order, allowing the client to specify exactly what suits their individual project. If your application demands something additional or different then please ask us. We also offer fast lead times for last minute deadlines.

#### For further information

T: +44 (0)1525 376974 E: [reply@encapsulite.co.uk](mailto:reply@encapsulite.co.uk) or visit [www.encapsulite.co.uk](http://www.encapsulite.co.uk)