

The logo for encapsulite, featuring a stylized green dotted arc above the brand name in a white, lowercase sans-serif font.

encapsulite

AP LED RD

REMOTE DRIVER





Suspended/Surface mounted. Linear diffused LED light with silver or black metalwork.

A SLIM TUBULAR DESIGN WITH 100° LIGHT DISTRIBUTION

The AP LED RD is a slim tubular design that can be suspended, or surface mounted with slotted brackets. The remote driver can be installed up to 2 metres away. The fitting has 100° light distribution through its polycarbonate satin diffuser.

The AP LED RD makes use of efficient LED technology offering switched or Dali dimming options for a controllable level of light output.

Light Source Information

- LED/Electronic Driver.
- Available in 3000K & 4000K

Installation

Horizontal, angled suspension or surface mounted.

Options

Silver or Black Metalwork

Optics

Satin polycarbonate diffuser.

Dimming

Dali.

Cat No.	Length (mm)	Lumens	Circuit Power (W)
AP LED RD2	595	1010	17
AP LED RD3	875	1640	24
AP LED RD4	1155	2470	30
AP LED RD5	1435	2932	38



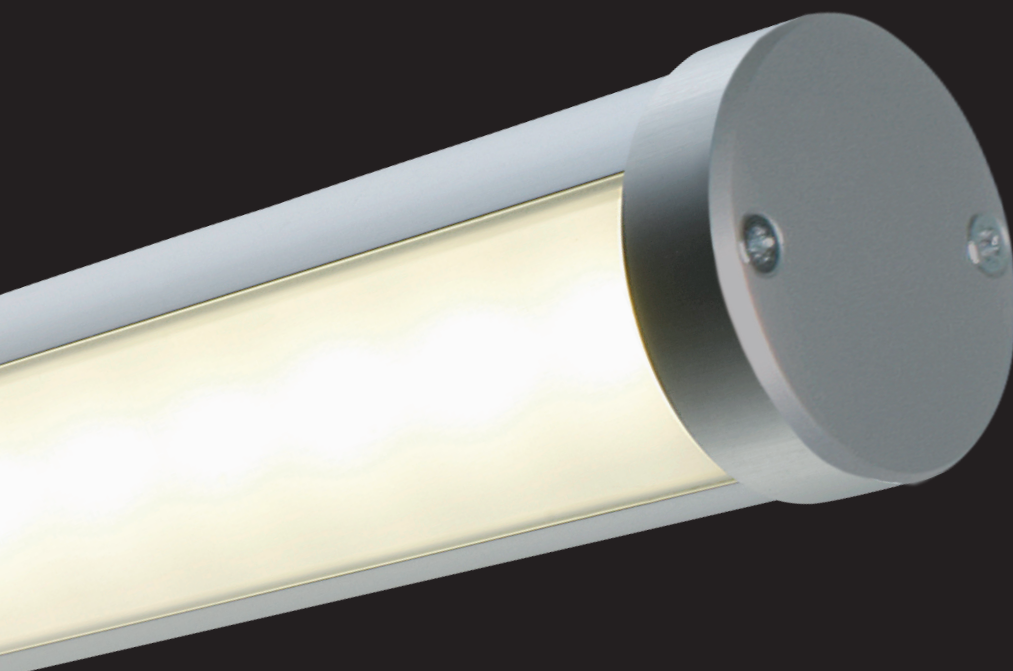
Mounting Bracket



Suspension Kit



Silver End Cap



For further information

Call: +44 (0)1525 376974

Email: reply@encapsulite.co.uk

or visit www.encapsulite.co.uk



Tube ø 38mm



Cap ø 40mm



Light output 100°