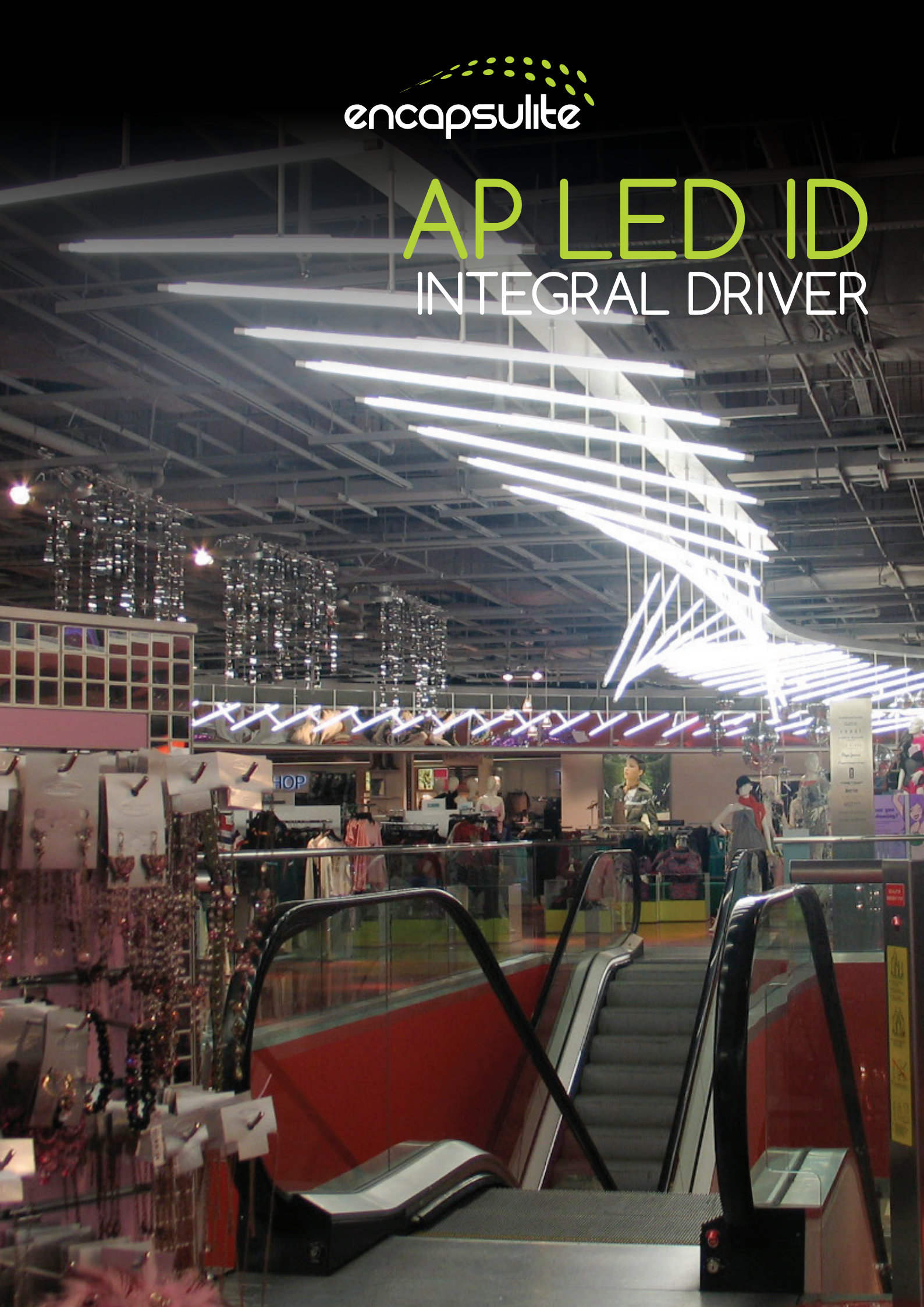


The logo for encapsulite, featuring a stylized green dotted arc above the brand name in a white, lowercase sans-serif font.

encapsulite

# AP LED ID

## INTEGRAL DRIVER





## Suspended/Surface mounted. Linear diffused LED light with silver or black metalwork.

### A SLIM TUBULAR DESIGN WITH 100° LIGHT DISTRIBUTION

The AP LED ID is a slim tubular design that can be suspended, or surface mounted offering 100° light distribution through its polycarbonate satin diffuser.

The AP LED ID is an incredibly attractive linear lighting solution, it makes use of efficient LED technology offering switched or Dali dimming options for a controllable level of light output.

#### Light Source Information

- LED/Electronic Driver.
- Available in 3000K & 4000K

#### Options

- 3hr Emergency with Dali monitoring.
- Silver or Black Metalwork.

#### Dimming

Dali.

| Cat No.    | Length (mm) | Lumens | Circuit Power (W) |
|------------|-------------|--------|-------------------|
| AP LED ID2 | 595         | -      | -                 |
| AP LED ID3 | 875         | -      | -                 |
| AP LED ID4 | 1155        | 3465   | 38                |
| AP LED ID5 | 1435        | 4085   | 45                |

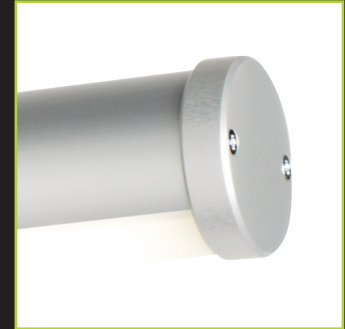
Emergency available from size 4.

#### Installation

Horizontal, angled suspension or surface mounted.

#### Optics

Satin polycarbonate diffuser.



Silver End Cap



Suspension Kit



Integral Driver



H 72mm x W 40mm



Cap ø 40mm



Light output 100°

#### For further information

Call: +44 (0)1525 376974

Email: [reply@encapsulite.co.uk](mailto:reply@encapsulite.co.uk)

or visit [www.encapsulite.co.uk](http://www.encapsulite.co.uk)