

MT70-Elipse-RD Remote driver

Suspended/Surface

encapsulite

ILLUMINATING BY DESIGN



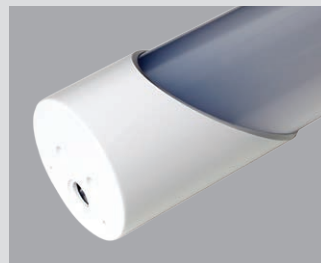
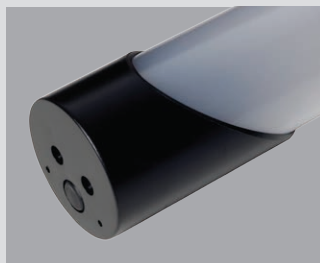
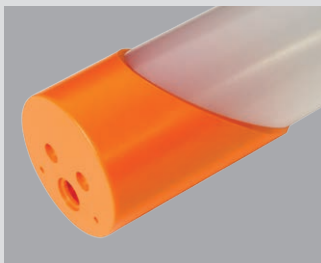
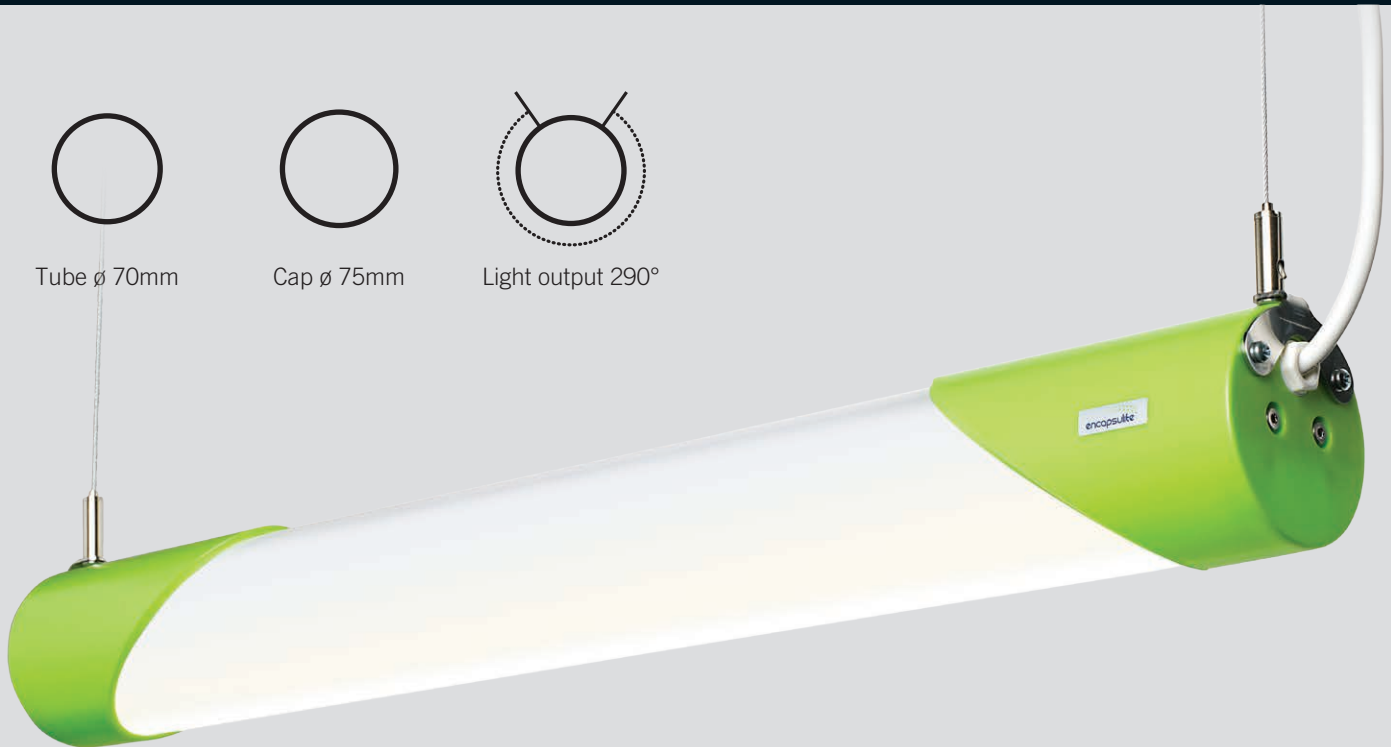
Tube \varnothing 70mm



Cap \varnothing 75mm



Light output 290°



Tubular diffused LED light, coloured polycarbonate V0 rated end caps.

The MT70-Elipse RD is a flexible robust LED diffused lit tube design, this can be suspended horizontally or surface mounted. The mounting of the internal LEDs offers a 290° distribution of light through its polycarbonate opal diffuser, Remote switched or dimmable drivers can be 5m from light.

The MT70-Elipse RD is an incredibly versatile linear lighting solution. Black or white end caps from stock, colour end caps to order.

70mm diameter, (75mm \varnothing end caps) the MT70-Elipse RD makes use of efficient LED technology offering switched or DALI dimming options for a controllable level of light output.

Suitable for almost any interior/dry application.



MT70-Elipse-RD Remote driver

Suspended/Surface

Light source information

LED/Electronic Driver 3000k 4000k 5000k
other variants to order please enquire.

LED outputs available from 12w-43w.

Design

Can be suspended horizontally
or surface mounted.

Polycarbonate opal diffuser with coloured
end caps of choice.

IP20 rated as standard.

Class II, ta 25°C, 850GWT.

Dimming

Non-dimmable as standard.

DALI or 1-10 available.

Installation

Two suspension points for fully adjustable
horizontal suspension.

Surface mounting with discreet fixings.

Optics

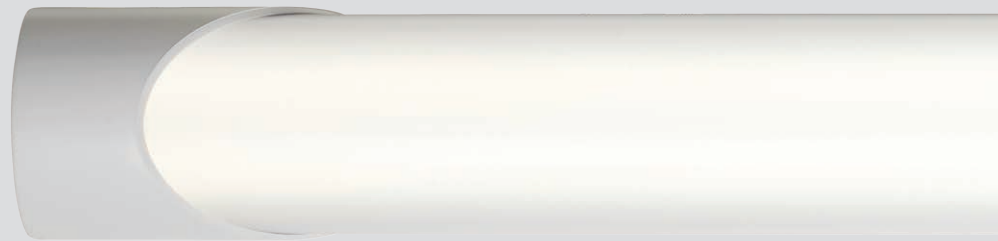
Opal diffuser.

Clear diffuser available.

Photometric data available.

Miscellaneous

If you would like to change something,
please ask.



Mounting options



Suspension



Surface mount

MT70-ELIPSE-RD REMOTE DRIVER SUSPENDED/SURFACE

PART NR	LENGTH mm	LM/W	CIRCUIT POWER W	LUMEN W	CE	230v 50-60 Hz	IP20	LED
MT70-Elipse-RD 2	595	104	16	1605				
MT70-Elipse-RD 3	895	125	22	2765				
MT70-Elipse-RD 4	1175	129	30	3655				
MT70-Elipse-RD 5	1465	126	35	4400				

ta 25°C	Class II	EEL A	850 GWT
------------	----------	----------	------------

For further information or options, call +44 (0) 1525 376974,
email reply@encapsulite.co.uk or visit www.encapsulite.co.uk