

# MT-IK10-LED T IP67

Surface mount

encapsulite

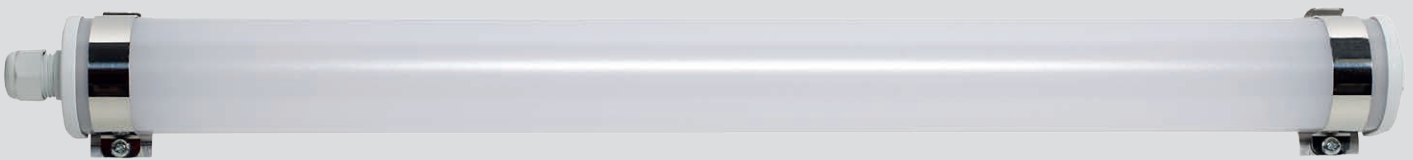
ILLUMINATING BY DESIGN



H55mm x W57mm



Light output 180°



## Linear diffused fluorescent light.

The MT-IK10 T IP67 is a slim D shaped lit tubular design that can be surface mounted with stainless steel clamps. This light offers a 180° light distribution through its polycarbonate opal diffuser.

The MTIK10-LED T IP67 is an incredibly strong linear lighting solution with a wall thickness of 3mm.

55mm High x 57mm wide the MT-IK10-LED T IP67 makes use of LEDs offering switched or DALI dimming options for a controllable level of light output.



# MT-IK10-LED T IP67

Surface mount

## Light source information

LED/Electronic Driver 3000k 4000k 5000k.

## Design

Surface mounted.

IP67 rated as standard.

## Mounting options



SS clamp

## Dimming

Non-dimmable as standard.

DALI available.

## Installation

Surface mounting with clamps.

Installation instructions available on request.

## Optics

Opal diffuser.

Photometric data available.

## Miscellaneous

3hr Emergency with or without DALI monitoring HE only.

If you would like to change something, please ask.

## MT-IK10-LED T IP67 SURFACE

PART NR	LENGTH mm	CLEAR Lm	Lm/CIRC W	SATIN Lm	Lm/CIRC W	CIRCUIT POWER W
<b>High efficiency</b>						
MT-IK10-LED T2	675-705	1015	91.44	930	83.78	11.1
MT-IK10-LED T3	965-995	1635	100.93	1485	91.67	16.2
MT-IK10-LED T4	1255-1285	2630	103.00	2230	87.45	23.7
MT-IK10-LED T5	1555-1585	2815	109.00	2255	87.40	25.8
MT-IK10-LED T4 EM	1295-1325	EM 80		EM 70		25.5
<b>High output</b>						
MT-IK10-LED T2-HO	675-705	2020	106.30	1840	102.10	19.0
MT-IK10-LED T3-HO	965-995	3230	118.30	2990	109.52	27.3
MT-IK10-LED T4-HO	1255-1285	4345	120.70	4495	116.50	36.0
MT-IK10-LED T5-HO	1555-1585	5580	124.00	5220	116.00	45.0

CE 230v 50Hz

ta 25°C Class I

IP67 LED

EEL A 850 GWT

HO Non maintained emergency only please enquire. Please note satin cover will reduce emergency output 20%.

For further information or options, call +44 (0) 1525 376974,  
email [reply@encapsulite.co.uk](mailto:reply@encapsulite.co.uk) or visit [www.encapsulite.co.uk](http://www.encapsulite.co.uk)